

# cookplay

## 2023



# cookplay

**Rex**

**Rama**

**Jelly**

**Gochi**

**The Tablet**

**Shell Line**

**Yayoi**

**Jomon**

**Naoto**

**Fly**

**COOKPLAY. Bringing emotion at the table.**

Since 2014 Cookplay has been working to create a new generation of porcelain tableware designed to provoke emotions through creativity.

Ana Roquero, CEO and designer of the brand, aspires to turn Cookplay into a benchmark of professionalism and service through its innovative designs aimed at the most contemporary and demanding tables.

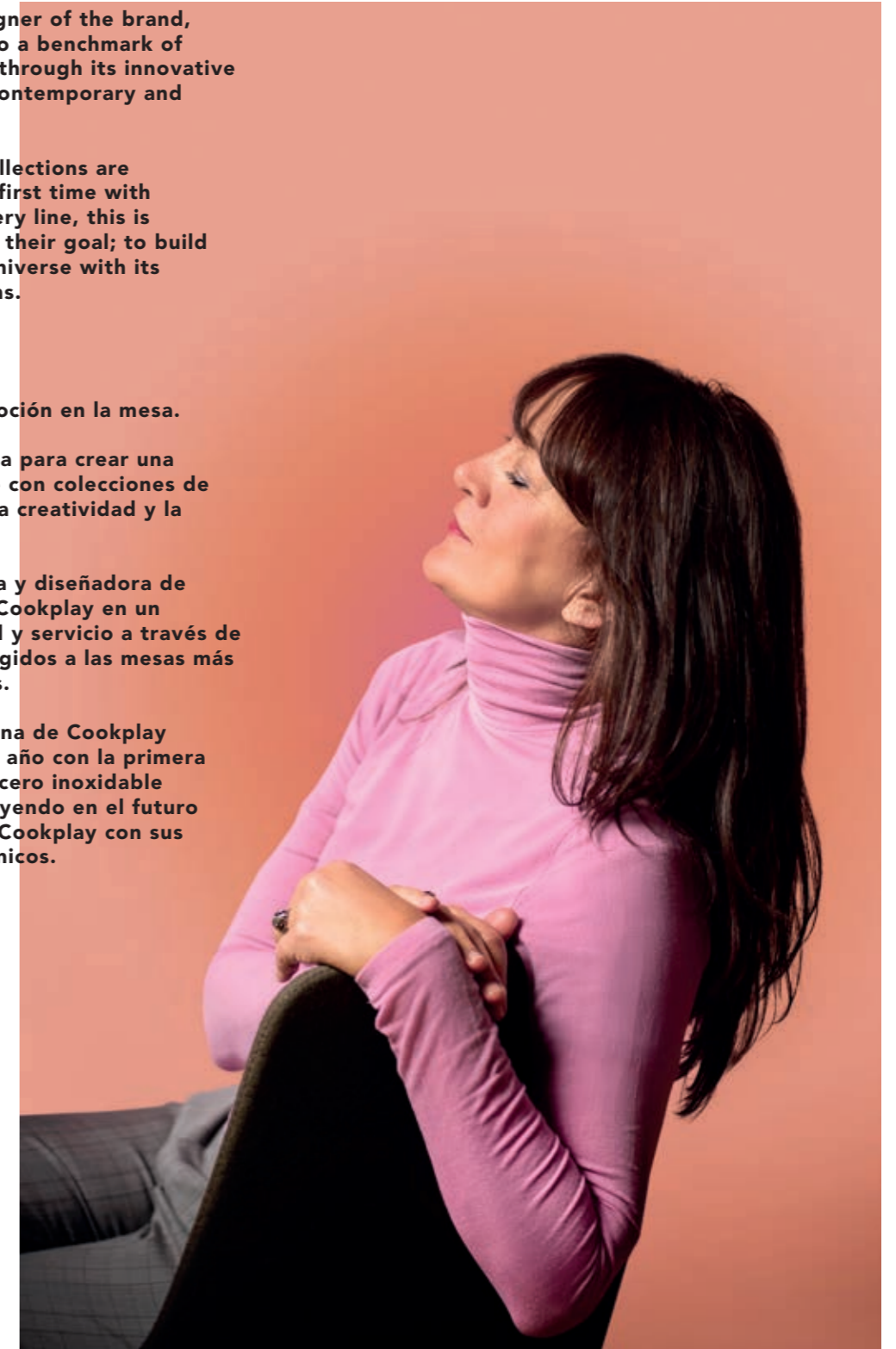
The 9 Cookplay porcelain collections are completed this year for the first time with a unique stainless steel cutlery line, this is another step closer towards their goal; to build a Cookplay's Food-design Universe with its characteristic organic designs.

**COOKPLAY. Provocando emoción en la mesa.**

Desde 2014 Cookplay trabaja para crear una nueva generación de menaje con colecciones de porcelana diseñadas desde la creatividad y la provocación de emociones.

Ana Roquero, como creadora y diseñadora de la marca, aspira a convertir Cookplay en un referente de profesionalidad y servicio a través de sus innovadores diseños dirigidos a las mesas más contemporáneas y exigentes.

Las 9 colecciones de porcelana de Cookplay son completadas desde este año con la primera colección de cubertería en acero inoxidable con el objetivo de ir construyendo en el futuro el Universo Food-design de Cookplay con sus característicos diseños orgánicos.



Ana Roquero CEO & Designer of Cookplay



**WE INVITE YOU TO DISCOVER REX**  
**the texture that creates life**

A texture can act as a creative seed and be the context in which a system of organic cellular forms is born and develops, generating the visual crop of my latest design "Rex" working as an authentic living organism.

The new Rex collection is made up of a free and intuitive three-dimensional graphic pattern that adapts and accommodates following an instinctive and natural path. Each cellular shape is drawn without intention and it is unique because it follows the logic of nature itself, adapting to the environment and without repetition.

The resulting texture, in each of its variants, opens the way to visionary graphics of great formal innovation and new aesthetic expression, which we present to you in four formats of flat supports and two ovoid volumes with lids.

**TE INVITAMOS A DESCUBRIR REX**  
**la textura que crea vida**

Una textura puede actuar como germen creativo y ser el contexto en el que nace y se desarrolla un sistema de formas celulares orgánicas que generan el cultivo visual de mi último diseño "Rex" funcionando como un auténtico organismo vivo.

La nueva colección Rex esta formada por un patrón gráfico tridimensional libre e intuitivo que se adapta y se acomoda siguiendo un trazado instintivo y natural. Cada forma celular es trazada carente de intención y es única porque sigue la lógica de la propia naturaleza, adaptándose al entorno y sin posibilidad de repetición.

La textura resultante, en cada una de sus variantes, nos abre paso a un grafismo visionario de gran innovación formal y nueva expresión estética, que os damos a conocer en cuatro formatos de soportes planos y dos volúmenes ovoidales con tapa.

# Rex

lively texture

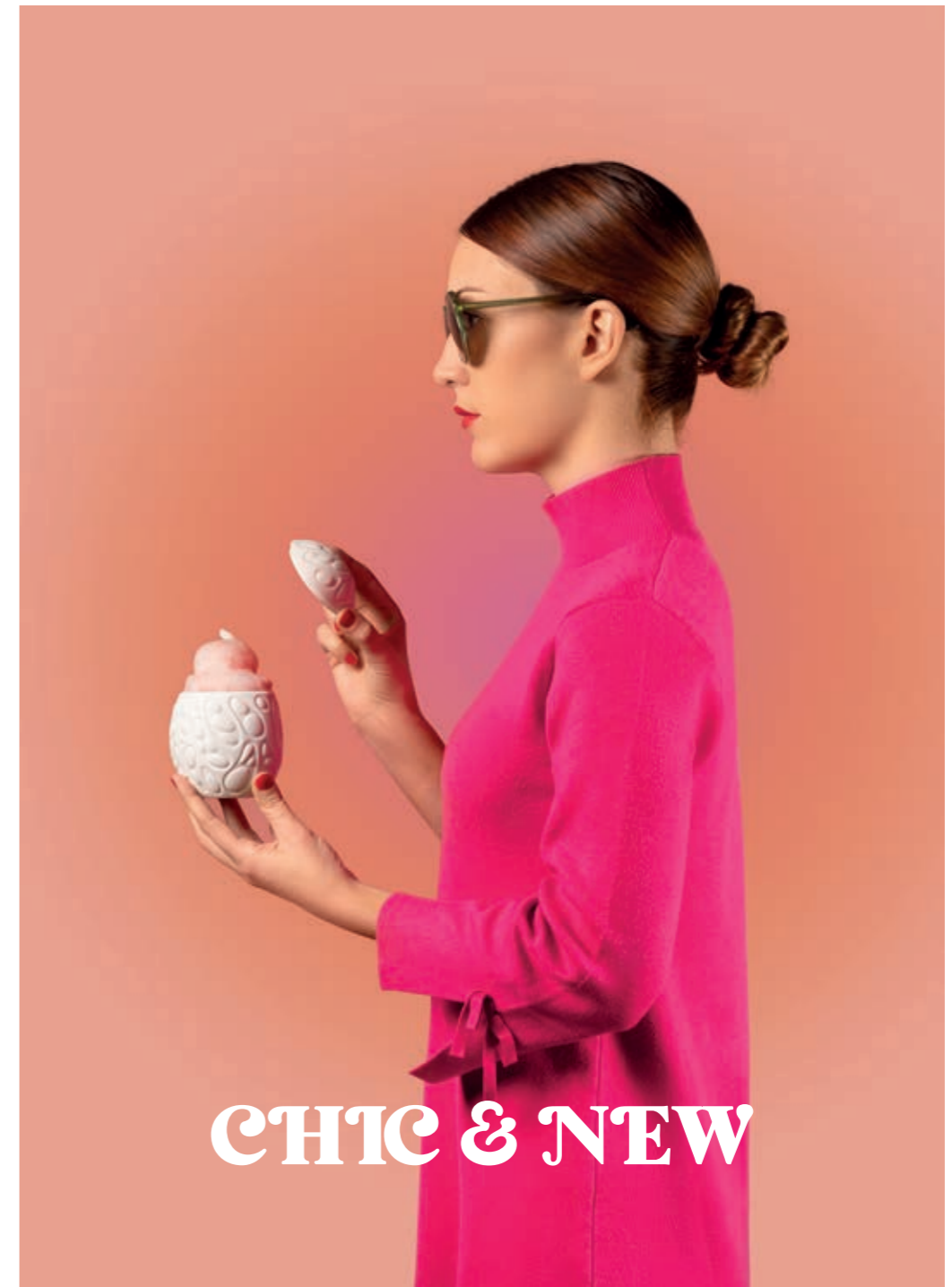




serving in a new aesthetic expression



**”Rex’s lively  
texture adapts  
itself naturally  
to every format”**



**CHIC & NEW**



## REX COLLECTION

- Available in porcelain matte finish
- Available in porcelain glazed finish



REX XS

Matt: 17011  
Glazed: 17001  
9 x 7.5 x 1.8



REX S

Matt: 17012  
Glazed: 17002  
16.5 x 13 x 2.5



REX M

Matt: 17013  
Glazed: 17003  
26 x 15 x 2.5



REX L

Matt: 17014  
Glazed: 17004  
29.5 x 24 x 2.5

- Available in porcelain matte finish outside, glazed inside



REX EGG S

17005  
9.5 x 8.5 x 8.5 (300ml)



REX EGG S TOP

17006  
7.5 x 7 x 3



REX EGG L

17007  
15.5 x 13 x 7 (500ml)

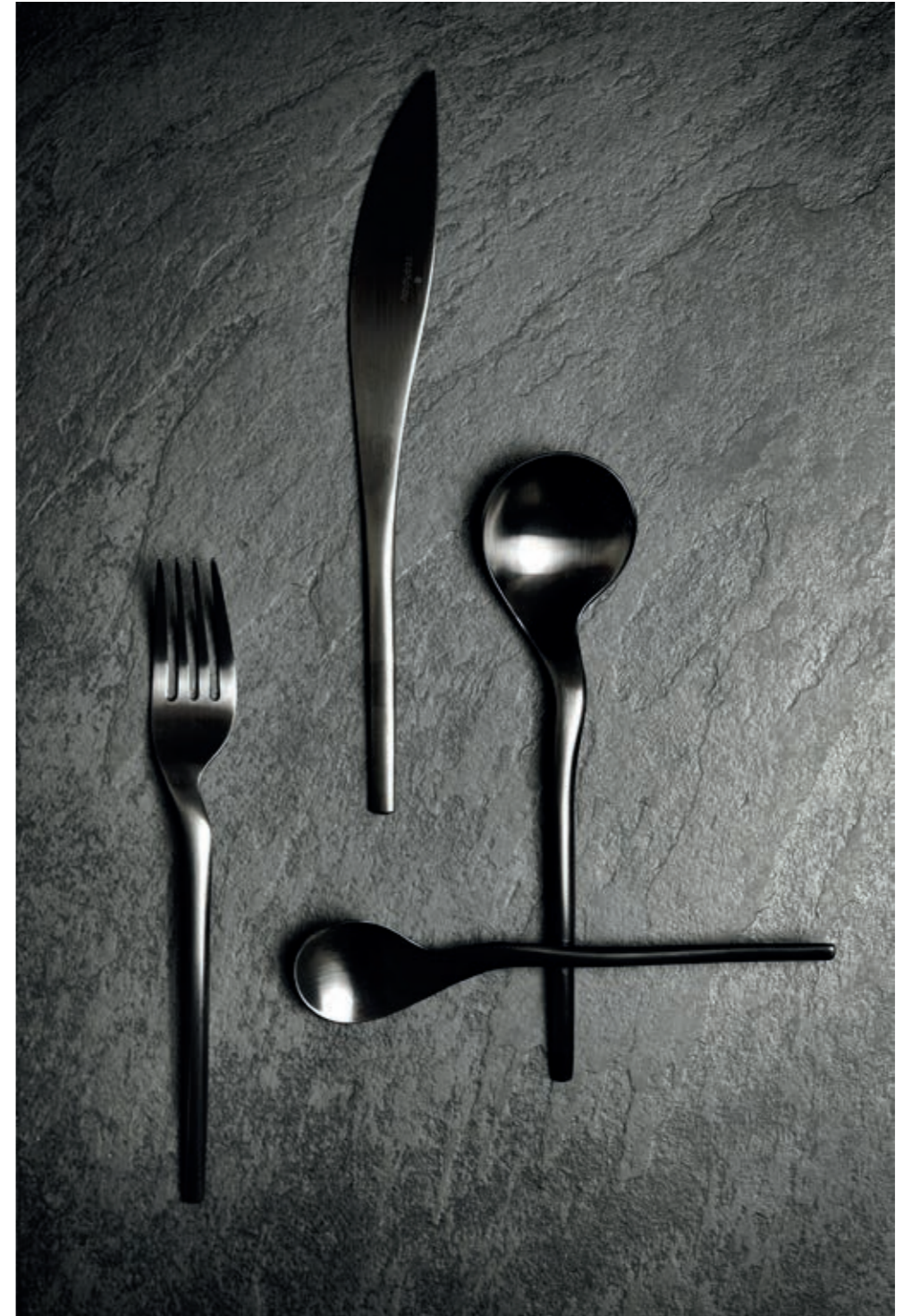
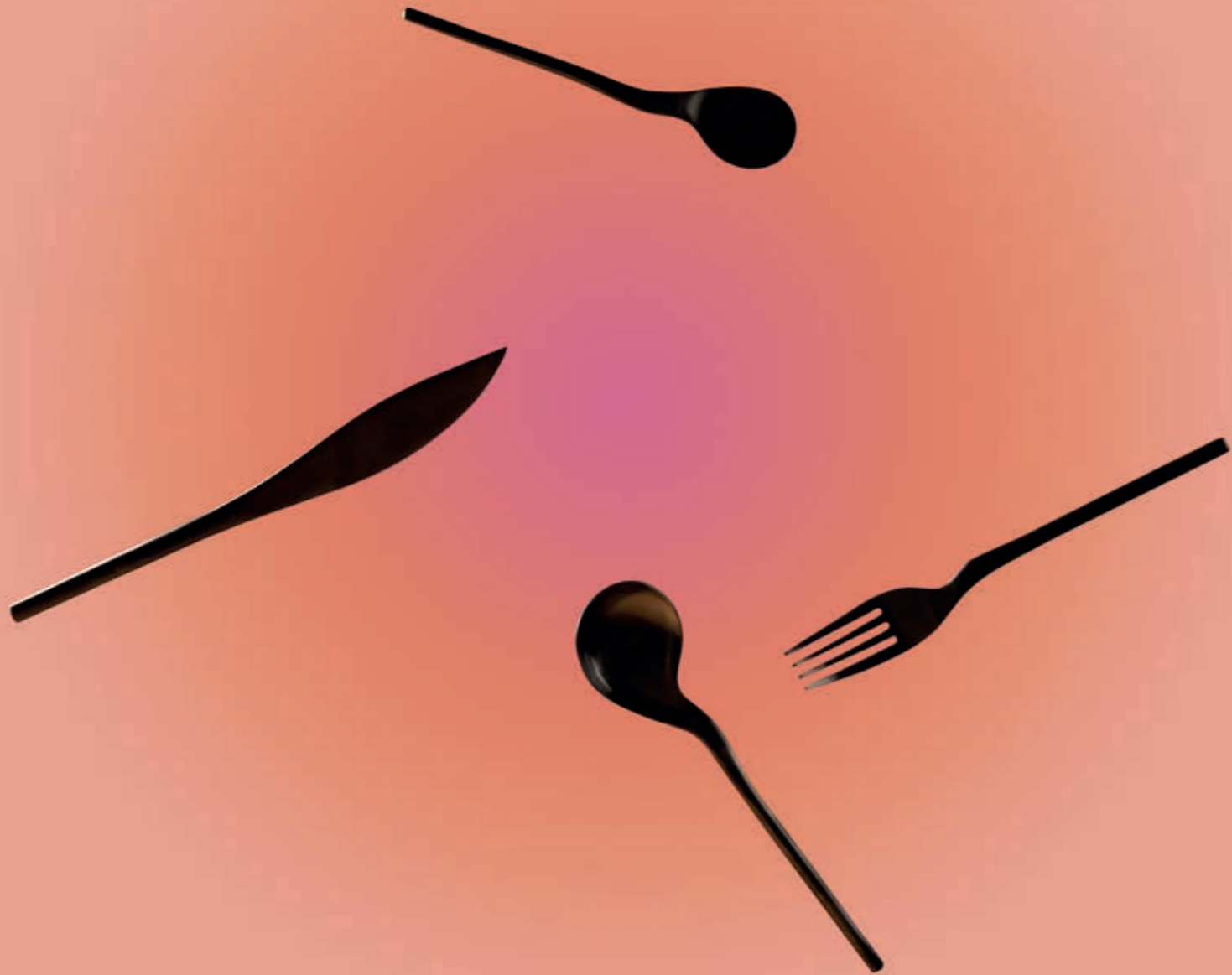


REX EGG L TOP

17008  
14 x 12 x 4

# Rama

steel cutlery design







## high performance

### RAMA COLLECTION BLACK MATTE

SS 18/10 (Hot treated twice) | Material thickness: 7.0 mm | Satin Polish + Titanium Coating (PVD)



Rama Fork - Black matte

60011  
21.5 x 3 x 2 cm



Rama Spoon - Black matte

60012  
21 x 4.5 x 2 cm



Rama Knife - Black matte

60013  
23.5 x 2.5 x 0.7 cm



Rama Dessert Spoon - Black matte

60014  
16.5 x 3.5 x 1.3 cm



## fresh innovation

### RAMA COLLECTION SILVER MATTE

SS 18/10 (Hot treated twice) | Material thickness: 7.0 mm | Satin Polish



Rama Fork - Silver matte

60001  
21.5 x 3 x 2 cm



Rama Spoon - Silver matte

60002  
21 x 4.5 x 2 cm



Rama Knife - Silver matte

60003  
23.5 x 2.5 x 0.7 cm



Rama Dessert Spoon - Silver matte

60004  
16.5 x 3.5 x 1.3 cm

# Jelly

fluidity on the table



# organic & ergonomic design





## JELLY COLLECTION

- Available in porcelain matt finish
- Available in porcelain glazed finish



Jelly Dinner

Matt: 16012  
Glazed: 16002  
29 x 23 x 2



Jelly Deep

Matt: 16013  
Glazed: 16003  
21 x 15.5 x 5 (300ml)



Jelly Platter

Matt: 16011  
Glazed: 16001  
37.5 x 19 x 2



Jelly Side

Matt: 16014  
Glazed: 16004  
18 x 11 x 2



Jelly Mini Bowl

Matt: 16015  
Glazed: 16005  
14 x 9 x 4.5 (100ml)



Jelly Cutlery Base

Matt: 16019  
Glazed: 16009  
6.5 x 2.5 x 0.8



Jelly Jar

Matt: 16018  
Glazed: 16008  
11 x 9 x 22 (1L)



Jelly Mini Jar

Matt: 16017  
Glazed: 16007  
6 x 4.5 x 12 (150ml)



Jelly Glass

Matt: 16016  
Glazed: 16006  
8.5 x 7.5 x 8 (200ml)

## JELLY BELTZ COLLECTION

- Available in black colour clay porcelain



Jelly Jar Beltz

16028  
11 x 9 x 22 (1L)



Jelly Mini Jar Beltz

16027  
6 x 4.5 x 12 (150ml)



Jelly Glass Beltz

16026  
8.5 x 7.5 x 8 (200ml)



Jelly Cutlery Base Beltz

16029  
6.5 x 2.5 x 0.8

# Gochi








animated silhouettes





**GOCHI COLLECTION**

· Available in porcelain matt finish

			
<b>Mum</b> 15004 D 21, H 6,5	<b>Dad</b> 15003 D 15,5, H 10,5	<b>Girl</b> 15002 D 12,5, H 7,5	<b>Baby</b> 15001 D 8, H 4 cm
			
<b>Twins</b> 15007 24,5 x 12 x 9,5	<b>Uncle</b> 15006 D 15 H 9,5 (100ml)	<b>Puppy</b> 15005 10 x 9,5 x 7	

# The Tablet

sophisticated modernity





## THE TABLET COLLECTION

· Available in porcelain matt finish



The Tablet

14001  
25 x 20.5 x 1.5



The Pot

14002  
15.5 x 14.5 x 9 (500ml)



The Nest

14003  
12 x 10 x 8.7 (150ml)



The Board

14005  
10 x 31.5 x 3



The Ball

14004  
7 x 7 x 7.7 (50ml)



The Super Ball

14009  
9.5 x 9.5 x 12 (100ml)



The Saucer

14006  
16 x 17.8 x 2.2



The Plate

14007  
22.2 x 25 x 2.3



The Platter

14008  
35.5 x 23.5 x 2.2



# Shell Line

essential design







**classy & elegance**

### SHELL LINE COLLECTION

- Available in porcelain matt finish
- Available in porcelain glazed finish



Shell Dinner

Matt: 12011  
Glazed: 12001  
27.5 x 28.5 x 2.5



Shell Deep

Matt: 12012  
Glazed: 12002  
25 x 26 x 6



Shell Dessert

Matt: 12014  
Glazed: 12004  
19.5 x 20.5 x 4



Shell Salad

Matt: 12013  
Glazed: 12003  
21.5 x 22 x 7.5 (500ml)



Shell Ramen

Matt: 12015  
Glazed: 12005  
18.5 x 19.5 x 8.5 (800ml)



Shell Ice Cream

Matt: 12017  
Glazed: 12007  
13 x 13.5 x 6.5 (250ml)

### SHELL LINE BELTZ COLLECTION

- Available in black colour clay porcelain



Shell Dinner Beltz

12021  
27.5 x 28.5 x 2.5



Shell Salad Beltz

12023  
21.5 x 22 x 7.5 (500ml)



Shell Ramen Beltz

12025  
18.5 x 19.5 x 8.5 (800ml)



Shell Ice Cream Beltz

12027  
13 x 13.5 x 6.5 (250ml)

# Yayoi natural sense





## YAYOI COLLECTION

- Available in porcelain matt finish
- Available in porcelain glazed finish



Yayoi Superflat

Matt: 11016  
Glazed: 11006  
26 x 24.5 x 4



Yayoi Flat

Matt: 11014  
Glazed: 11004  
23 x 20 x 3.5



Yayoi Deep

Matt: 11013  
Glazed: 11003  
19 x 16 x 4



Yayoi Side

Matt: 11012  
Glazed: 11002  
14 x 11 x 3



Yayoi Appetizer

Matt: 11011  
Glazed: 11001  
10 x 6 x 3.5 (15ml)



Yayoi Bowl

Matt: 11017  
Glazed: 11007  
20.5 x 14 x 7 (430ml)



Yayoi Board

Matt: 11018  
Glazed: 11008  
33.5 x 12 x 3.5



Yayoi Set

Matt: 11015  
Glazed: 11005



volcanic  
rock  
texture



YAYOI BELTZ COLLECTION

· Available in black colour clay porcelain



Yayoi Superflat Beltz

11026  
26 x 24.5 x 4



Yayoi Flat Beltz

11024  
23 x 20 x 3.5



Yayoi Deep Beltz

11023  
19 x 16 x 4



Yayoi Side Beltz

11022  
14 x 11 x 3



Yayoi Appetizer Beltz

11021  
10 x 6 x 3.5 (15ml)



Yayoi Bowl Beltz

11027  
20.5 x 14 x 7 (430ml)



Yayoi Board Beltz

11028  
33.5 x 12 x 3.5



Yayoi Set Beltz

11025

# Bamboo Trays



## YAYOI BAMBOO TRAY COLLECTION



**Yayoi Catering Tray**

11203  
64 x 29 x 2.5



**Yayoi XL Tray**

11204  
60 x 45 x 2.5



**Yayoi Small Tray**

11201  
31 x 29 x 2.5



**Yayoi Big Tray**

11202  
43 x 36 x 2.5

# Jomon

iconic & unique







## JOMON COLLECTION



Jomon Mini  
White

10201  
10 x 8 x 5



Jomon Mini  
Black

10206  
10 x 8 x 5



Jomon Mini  
Gold

10204  
10 x 8 x 5



Jomon Mini  
Silver

10205  
10 x 8 x 5



Jomon S  
White

10301  
14 x 11 x 4



Jomon S  
Black

10306  
14 x 11 x 4



Jomon S  
Gold

10304  
14 x 11 x 4



Jomon S  
Silver

10305  
14 x 11 x 4



Jomon L  
White

10501  
18 x 14 x 9



Jomon L  
Black

10506  
18 x 14 x 9



Jomon L  
Gold

10504  
18 x 14 x 9



Jomon L  
Silver

10505  
18 x 14 x 9

## JOMON PORCELAIN TRAY COLLECTION

- Available in porcelain matt finish
- Available in porcelain glazed finish



Jo 1

Matt: 20111  
Glazed: 20101  
7 x 8 x 1



Jo 2

Matt: 20112  
Glazed: 20102  
29 x 10 x 1



Jo Plate



Matt: 20113  
Glazed: 20103  
29 x 15 x 2



**Beltz: our black matt porcelain**

**JOMON BELTZ COLLECTION**

· Available in black colour clay porcelain

		
Jomon Mini Beltz	Jomon S Beltz	Jomon L Beltz
10207 10 x 8 x 5	10307 14 x 11 x 4	10507 18 x 14 x 9

**JOMON BAMBOO TRAY COLLECTION**

		
Jo 1 Bamboo	Jo 2 Bamboo	Jo Plate Bamboo
20201 7 x 8 x 1	20202 29 x 10 x 1	20203 29 x 20 X 1
		
Jo 8 Bamboo	Jo 12 Bamboo	
20204 44 x 20 x 1	20205 52 x 22 x 1	

# Naoto



**functional and pleasant forms  
for casual meals**

NAOTO WHITE COLLECTION



Naoto Side White

50001  
13 x 12 x 2.5



Naoto Ø 17 White

50003  
17 x 16 x 2.5



Naoto Ø 25 White

50005  
25 x 22.5 x 2.5



Naoto Ø 29 White

50006  
29 x 26.5 x 2.5



Naoto Bowl White

50002  
14 x 12 x 6



Naoto Deep White

50004  
23 x 20,5 x 5



Naoto Board White

50007  
42 x 12,5 x 2,5



Naoto Serving dish White

50008  
36 x 20 x 5



NAOTO ICE BLUE COLLECTION



Naoto Side Ice Blue

50021  
13 x 12 x 2.5



Naoto Ø 17 Ice Blue

50023  
17 x 16 x 2.5



Naoto Ø 25 Ice Blue

50025  
25 x 22.5 x 2.5



Naoto Ø 29 Ice Blue

50026  
29 x 26.5 x 2.5



Naoto Bowl Ice Blue

50022  
14 x 12 x 6



Naoto Deep Ice Blue

50024  
23 x 20,5 x 5



Naoto Board Ice Blue

50027  
42 x 12,5 x 2,5



Naoto Serving dish Ice Blue

50028  
36 x 20 x 5

NAOTO DARK GRAY COLLECTION



Naoto Side Dark Gray

50011  
13 x 12 x 2.5



Naoto Ø 17 Dark Gray

50013  
17 x 16 x 2.5



Naoto Ø 25 Dark Gray

50015  
25 x 22.5 x 2.5



Naoto Ø 29 Dark Gray

50016  
29 x 26.5 x 2.5



Naoto Bowl Dark Gray

50012  
14 x 12 x 6



Naoto Deep Dark Gray

50014  
23 x 20,5 x 5



Naoto Board Dark Gray

50017  
42 x 12,5 x 2,5



Naoto Serving dish Dark Gray

50018  
36 x 20 x 5

# Fly

stylish coffee



light & clean.



## FLY COLLECTION

· Available in porcelain matt finish (inside glazed)



Fly 60  
Cup & Saucer

13011



Fly 60 Cup

13013  
D 6.5 H 7



Fly 60 Saucer

13014  
D 9 H 2



Fly 140  
Cup & Saucer

13012



Fly 140 Cup

13015  
D 9 H 8



Fly 140 Saucer

13016  
D 11 H 2



Fly Jug

13017  
14.5 x 8.5 x 11 (170ml)

· Available in porcelain glazed finish



Fly 80  
Cup & Saucer

13001



Fly 80 Cup

13003  
D 8.5 H 5.4



Fly 80 Saucer

13004  
D 13 H 2



Fly 180  
Cup & Saucer

13002



Fly 180 Cup

13005  
D 9.5 H 7.5



Fly 180 Saucer

13006  
D 15.5 H 2



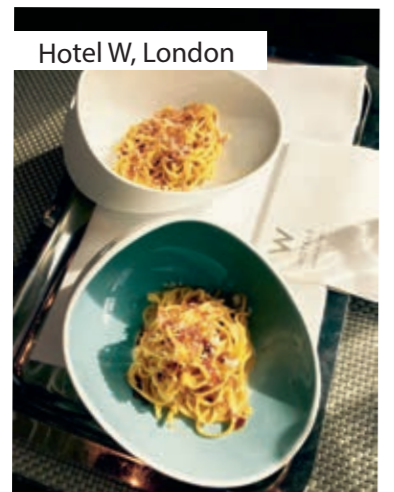
Lasarte, Barcelona \*\*\*



Zarate restaurant \*



Le Basque Catering, Miami



Hotel W, London



Yoshiharu Kaji, Felix chef at Peninsula Hotel Hong Kong



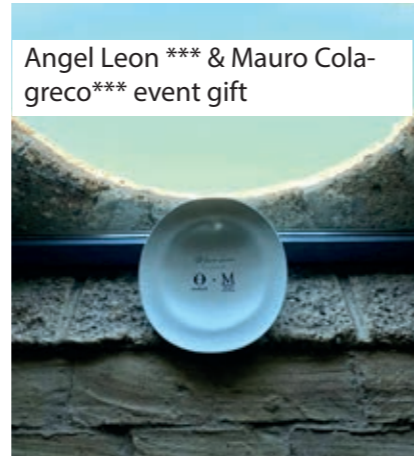
Julien Dugourd \*\*



Gaston Acurio, Peru



Gordon Ramsay \*\*\*



Angel Leon \*\*\* & Mauro Colagreco\*\*\* event gift

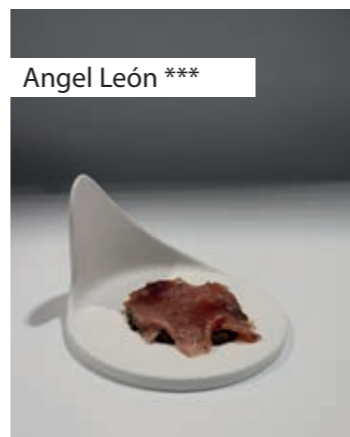
Hotel Marriott Renaissance, Paris



Dominique Crenn \*\*\*



Celler de Can Roca \*\*\*



Angel León \*\*\*



Four Seasons, Madrid



Maison Carte D'Or, Paris



Paco Morales \*\*



Juan Mari Arzak \*\*\*



Eneko Atxa \*\*\*



Fondation Louis Vuitton catering Potel et Chabot



Merci, Paris



Akrame \*, Paris



David Yárnoz \*\*



Francis Paniego, El Portal \*\*



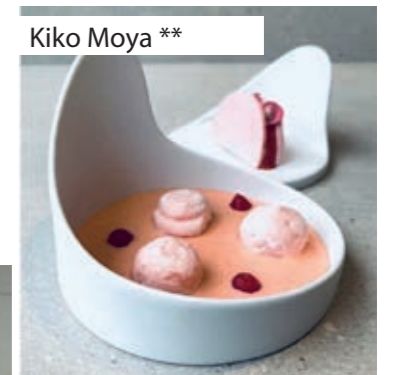
Park Hyatt \*, Paris



Lafayette Gourmet, Dubai



Asador Etxebarri \*



Kiko Moya \*\*



Martin Berasategui \*\*\*

# PROJECTS WE LOVE

## COOKPLAY CARE INSTRUCTION

### • Porcelain matt finish (Biscuit Porcelain)

Biscuit is pure porcelain from the oven at 1,300 degrees, unglazed. It has no pores so it is a material with great properties in terms of density, hardness and easy to clean superficially. However, stubborn stains from food or flatware must be removed before the dishwasher with soap and the green part of the sponge (e.g Scotch Brite).

We suggest to immerse the pieces from time to time in water with a normal whitening powder to keep the white and brightness of the porcelain.

Professional dishwasher safe, microwave safe and suitable for oven to gratinate and keep warm.

### • Care for gold and silver finish, Jomon collection.

Professional dishwasher safe, but not safe for microwave or oven.

We recommend to place a separator between bowls when stacked. Silver and gold finish can be damage when the external matt porcelain of the piece touches the next bowl edge.

---

## COOKPLAY RECOMENDACIONES DE USO

### • Porcelana Mate (Biscuit)

La porcelana biscuit es la porcelana más pura cocida a 1.300 grados sin esmalte y conserva unas propiedades excelentes en cuanto a dureza y resistencia con una fácil limpieza superficial. Para evitar las manchas de alimentos o de cubiertos se debe de limpiar la comida del plato con jabón y la parte verde de la esponja (Scotch Brite) antes del lavavajillas.

Recomendamos ocasionalmente sumergir la vajilla en un baño de agua con algunos polvos blanqueadores o lejía para mantener el blanco y el brillo de la porcelana.

Apto para lavavajillas, microondas y horno para gratinar y calentar.

### • Colección Jomon acabados dorado y plateado

Apto para lavavajillas pero no apto para microondas ni horno.

Recomendamos poner un separador entre los boles para apilar y almacenar ya que los esmaltes se pueden dañar cuando la porcelana mate externa toca el borde del esmalte dorado o plateado.

## FOLLOW US



---

Copyright © 2023 Cookplay  
Published and designed by Cookplay

All rights reserved. No part of this publication may be reproduced or transmitted in any form or by any means, electronic or mechanical, including photography, recording or any information storages and retrieval system without permission in writing from publisher.

Photographs by Mikel Ponce, Aitor Ortiz & Cookplay

With special thanks to Chef Alvaro Garrido & Chef Israel Ramos



[www.cookplay.eu](http://www.cookplay.eu)